

USER MANUAL

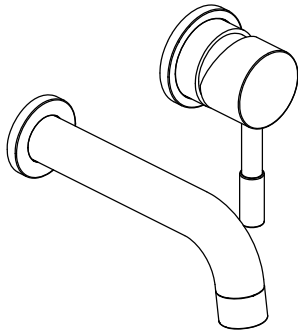


Thank you for choosing Better Bathrooms.
Please read this manual before installing your product
and keep for future reference.

better
bathrooms

Product name-2 Tone wall Mounted Basin(bath) Mixer Tap-Arissa

Product code -AR2TWMBM, AR2TWMBATHM



- **Single-person assembly**
- **We always recommend using professional tradespeople to install your product**

V1_03.02.2024

1

Congratulations on your purchase

And welcome to our growing gang of savvy shoppers

We're on a mission to bring you extraordinary bathroom products, for less. From modern to traditional style ceramics, plus the gorgeous fixtures, fittings and furniture to match. So, you can fall in love with your space every single day .

As one of the UK's largest independent bathroom stores, we've received countless awards; including the National Business Awards UK, the Digital Entrepreneur Awards and being placed on The Sunday Times Fast Track 100.

We hope your new product exceeds your highest expectations. However, if you experience any problems, please:

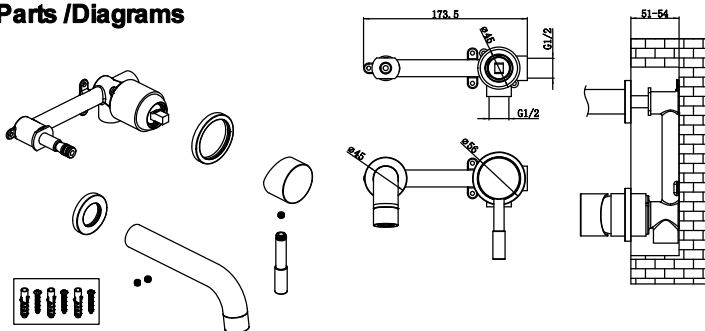
- log in to your account and contact our customer services team via your self-serve portal-betterbathrooms.com/CustomerAccount/Login.
- contact us via-betterbathrooms.com/content/contact-us.

Important information

- Please read these instructions thoroughly and retain for future reference
- All installation work must be carried out to comply by a qualified installer.
- Always check pressure compatibility, check website for min/max pressure of product.
- Pressures to hot and cold supplies should be balanced for optimum performance
- All installation work must be carried out to comply with the Water Bylaw Regulations.
- Isolation valves should be fitted to both supply pipes as part of the installation
- System must be flushed through prior to installation.
- The area should be checked for pipes and wires before drilling.

2

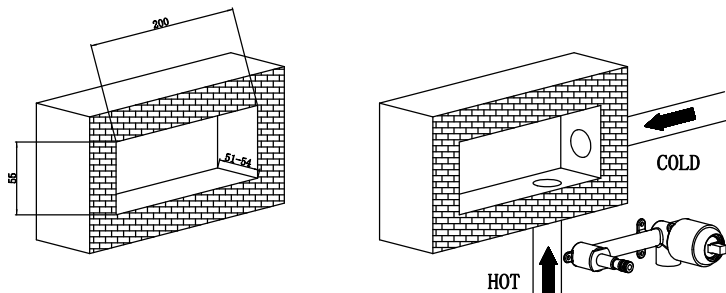
Parts /Diagrams



Tools required

- Spanner
- Allen key

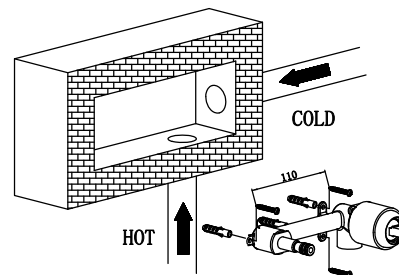
Installation



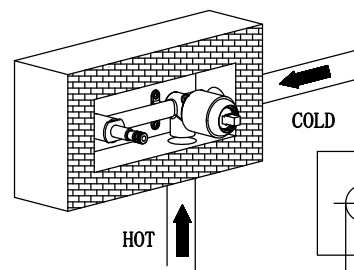
Step1:
Determine the fixing position for the faucet body. Make a groove in the wall according to the faucet body. The dimension of the groove should be 200mm x55mm.

Step 2:
Drill the holes on the wall and connect the cold water inlet and hot water inlet to proper positions.

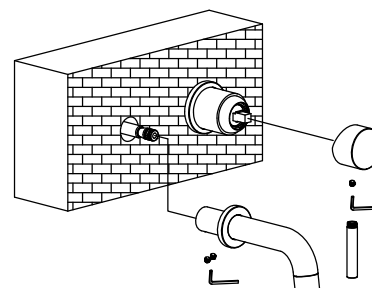
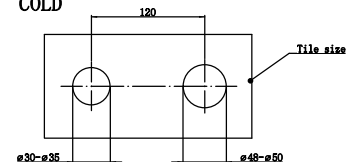
3



Step3:
Install the tap body to the right position and make sure Hot&Cold water inlets correct

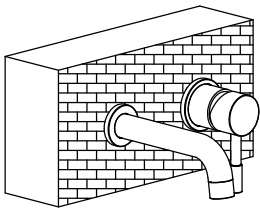


Step 4:
Mount the mixer body. Drill the tile as per the dimension on the right and fit it on the wall.



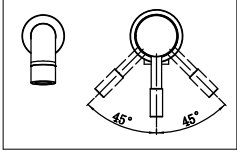
Step 5:
Screw off the handle lever, and assemble the handle and spout using the Allen key. Then fix the handle lever.

4



Step 5:
Installation completed.

OPERATION

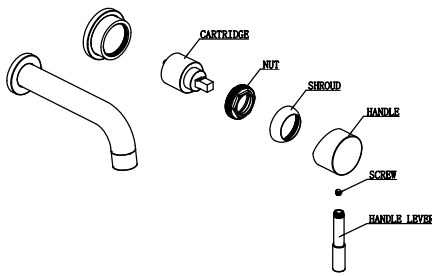


Lift up the handle to open, turn left to hot water, turn right to cold water, and mix cold and hot water in the middle.

Maintenance

Cartridge removal

IMPORTANT: Ensure to turn off the water supply to the mixer prior to any maintenance
Please note: Design may vary from those shown below



1. Remove screw cap cover.
2. Loosen grub screw using a allen key,
3. Pull handle from the mixer.
4. Unscrew cartridge shroud.
5. Using a spanner remove cartridge nut.
6. Pull the cartridge from the mixer.
7. Carry out maintenance.
8. Replace cartridge ensuring to locate pins on the underside of the cartridge with holes inside the mixer.
9. Replace all components (do not overtighten cartridge nut)

CLEANING

To maintain the surface of your product, wipe with a clean damp cloth and wipe dry. Do not use abrasive cleaning agents or materials which can strip and scratch the surface: the use of these agents or materials can invalidate your guarantee. It is recommended to wipe and dry on a regular basis.

For more information

• visit betterbathrooms.com

• email customerservices@buyitdirect.co.uk

• call 03303903062

• write to Trident Business Park, Neptune Way, Huddersfield, HD2 1UA

**better
bathrooms**

Part of the BuyItDirect Group